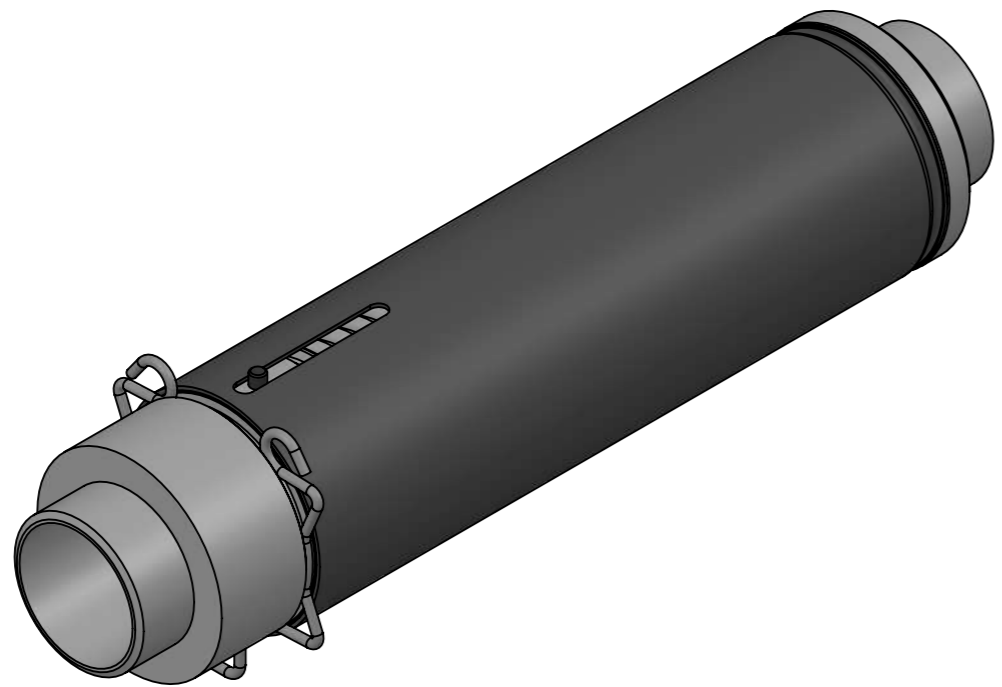
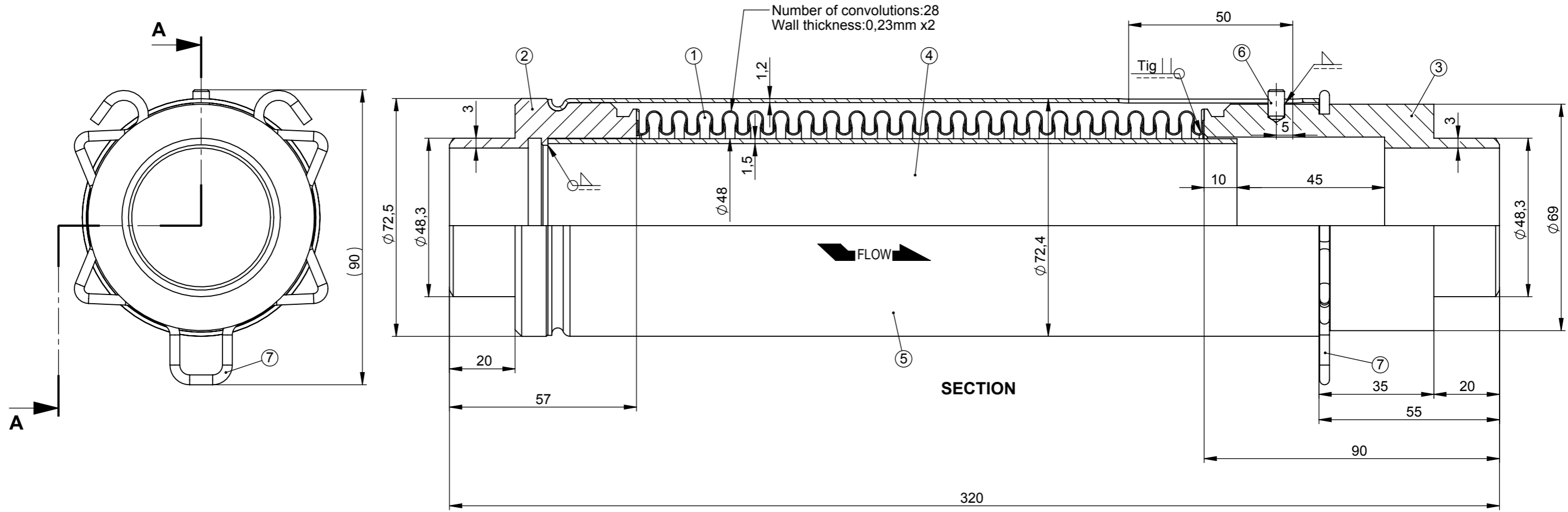


A
B
C
D
E
F



Pre-tension: 20mm.

No Item	Ad. Qty.	PARÇA ADI / Part name	MALZEME Material	ÖLÇÜ Size	RESİM NO Drawing No	AÇIKLAMA Explanations
7	1	SEGMENT	Spring steel wire		602020102020	Zn coated
6	1	PIN	9 SMn 36		602060401006	
5	1	OUTER SLEEVE	Aluminium		602060301010	
4	1	INNER SLEEVE	AISI 321		602060201010	
3	1	THREADED END (Long one)	9 SMn 36		602060202110	
2	1	THREADED END (Short one)	9 SMn 36		602060202210	
1	1	BELLOW	AISI 321		A100021050	

Çizen / Drawer	Isim / Name	Tarih / Date	İmza / Signature	Ölçek Scale												
Kontrol / Control	R.DAŞTAN	04.10.2017		-----												
Onay / Approval	R.DAŞTAN															
Parça Adı / Part Name	PIPE TYPE EXPANSION JOINT WITH BUTT WELDING ENDS G11/2"															
Ürün Tipi / Product Type	-															
Müşteri Kodu / Customer Code	-	Malzeme Material	Miktar Qty.	Ağırlık Weight												
Firma Resim No / Firm Drawing No	-	-	-	-												
<table border="1"> <tr> <td>Stainless steel</td> <td>TSE EN ISO 9445</td> </tr> <tr> <td>Pipe</td> <td>TSE EN 10305/3 , 10305/4</td> </tr> <tr> <td>Pipe bending</td> <td>TSE EN 10219/2</td> </tr> <tr> <td>Lenght</td> <td>EN 14917</td> </tr> <tr> <td>Flange</td> <td>TS 818</td> </tr> <tr> <td>Steel structures</td> <td>EN 10025/1</td> </tr> </table>					Stainless steel	TSE EN ISO 9445	Pipe	TSE EN 10305/3 , 10305/4	Pipe bending	TSE EN 10219/2	Lenght	EN 14917	Flange	TS 818	Steel structures	EN 10025/1
Stainless steel	TSE EN ISO 9445															
Pipe	TSE EN 10305/3 , 10305/4															
Pipe bending	TSE EN 10219/2															
Lenght	EN 14917															
Flange	TS 818															
Steel structures	EN 10025/1															
Item No	702.020.030.010															
CAD No	-															
				R00												

